

# Bayounitech's Physical Security Portfolio

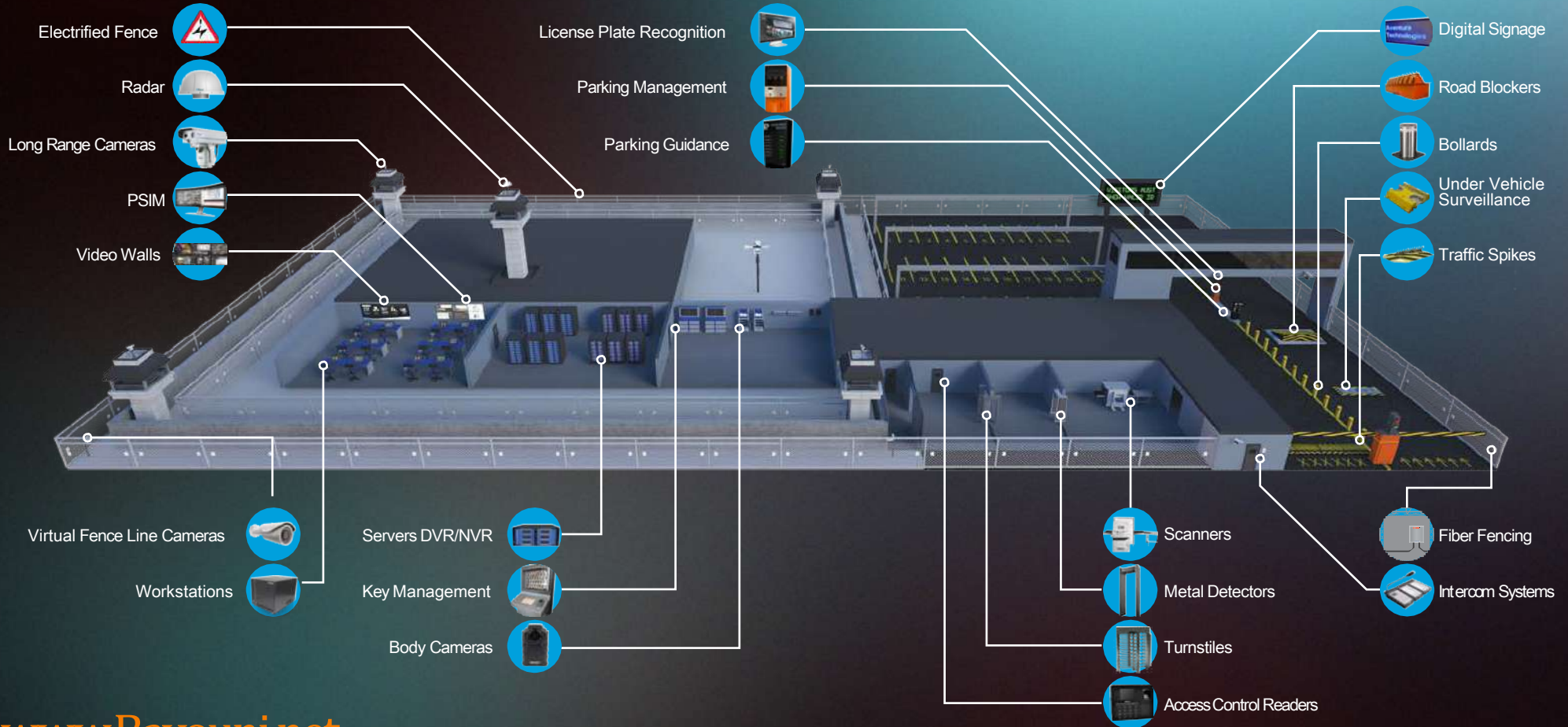
Intelligence where you need it

June 2019



High Commission for Industrial Security  
Secretarial General  
Ministry of Interior

# Bayouni Security Solutions 2019



[www.Bayouni.net](http://www.Bayouni.net)

**Bayouni Security Solutions Co.**

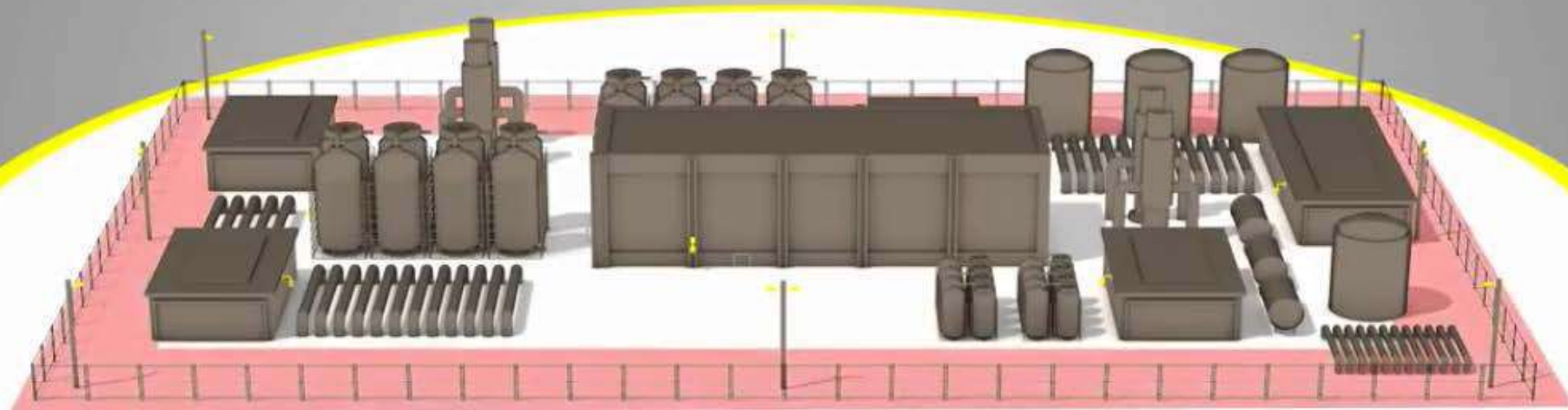
HEAD OFFICE, Al-Khobar, Al-Khobar Al-shmaliah, Cournaich Road, Prince Turkey St, Jarir Book Store – 4<sup>th</sup> floor – Wing 409/410  
Tel: +966138642148 / Fax: +966138647047

**bayounitech**

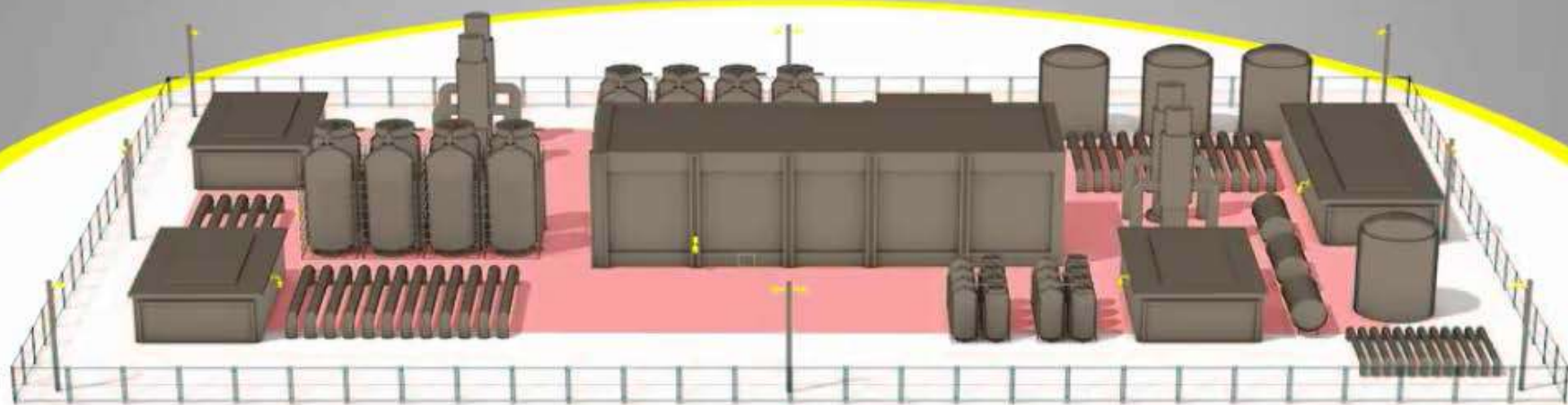


High Commission for Industrial Security  
Secretarial General  
Ministry of Interior

# 1st layer - perimeter

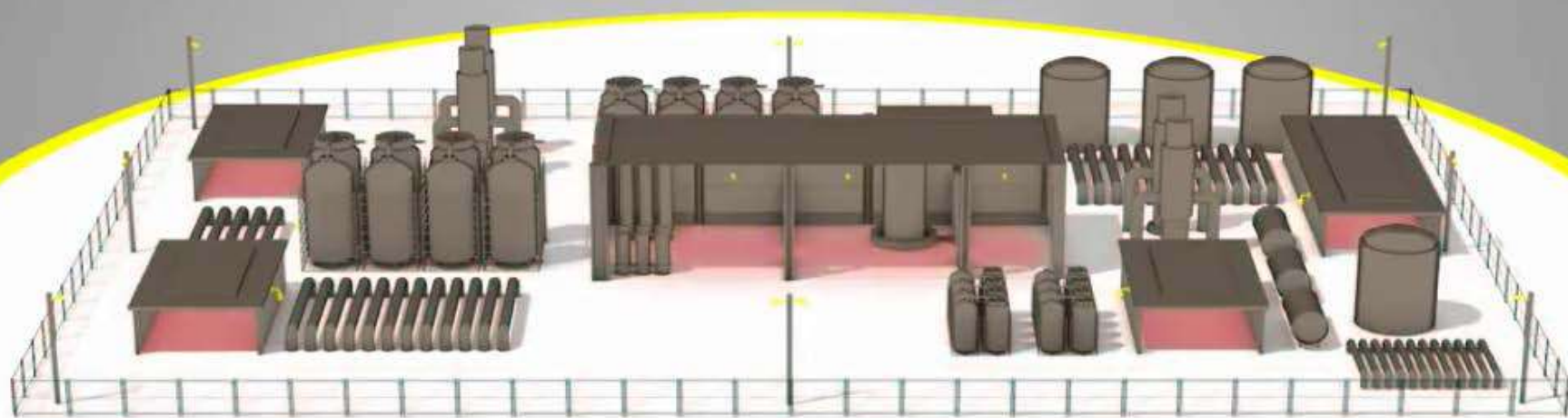


## 2nd layer - internal area





# 3rd layer - building



# Technologies



Security Surveillance



Access Control



Building Management



Parking Management

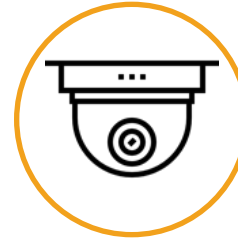


TV Network



Information Technology

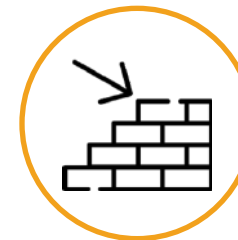
# ***Security Surveillance***



CCTV



Video Content Analysis



Intrusion Detection

# CCTV



**Bullet**

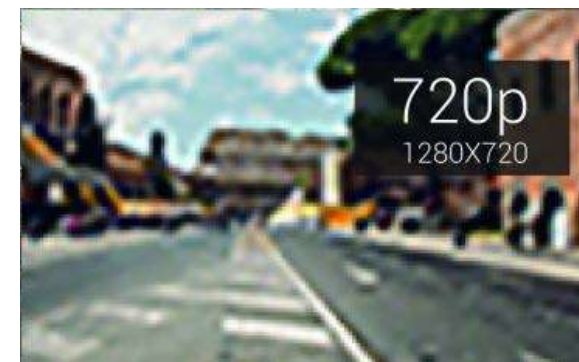
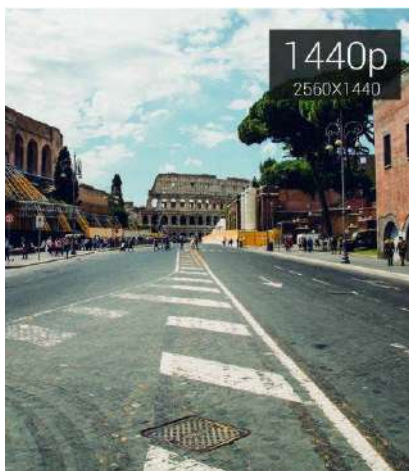


**Dome**



**PTZ**

## Normal Range





# CCTV -Resolution

**8 MP**



**5 MP**



**2 MP**



# CCTV – lens Comparison



# CCTV – Special

To meet the requirements of our ever-changing market, we pride ourselves on being a complete fire alarm system supplier. This means our customers can rely on us for their entire fire system requirements.



**Thermal Camera**



**Explosion Proof Camera**



**Long Range Camera**

# CCTV – Special

To meet the requirements of our ever-changing market, we pride ourselves on being a complete fire alarm system supplier. This means our customers can rely on us for their entire fire system requirements.



**Fish Eye**



**PTZ dome for harsh environments**



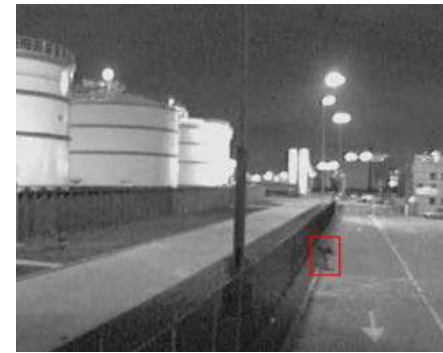
**Roughneck prison**



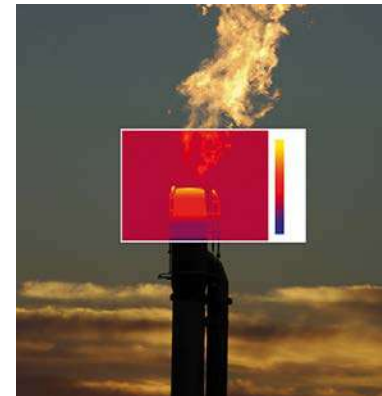
**Highway Monitoring**



# CCTV – Special



**Perimeter Intrusion Detection**



**Flare Monitoring**



**Hotspot Detection**



# CCTV - Enforcement Speed

To meet the requirements of our ever-changing market, we pride ourselves on being a complete fire alarm system supplier. This means our customers can rely on us for their entire fire system requirements.



**Fixed**



**Fixed**



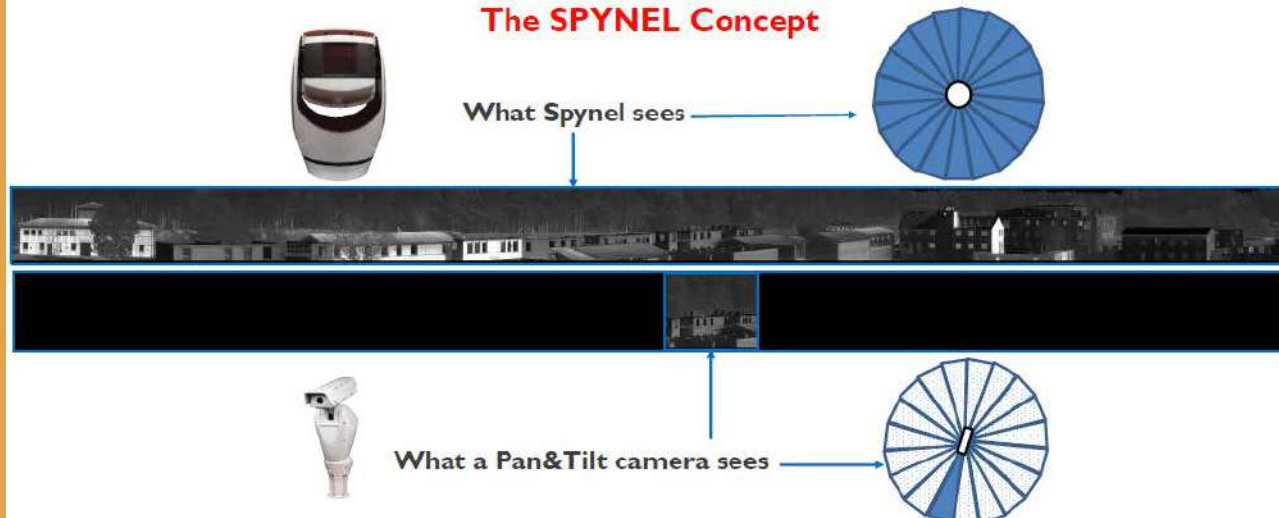
**Mobile**

# SpyNel



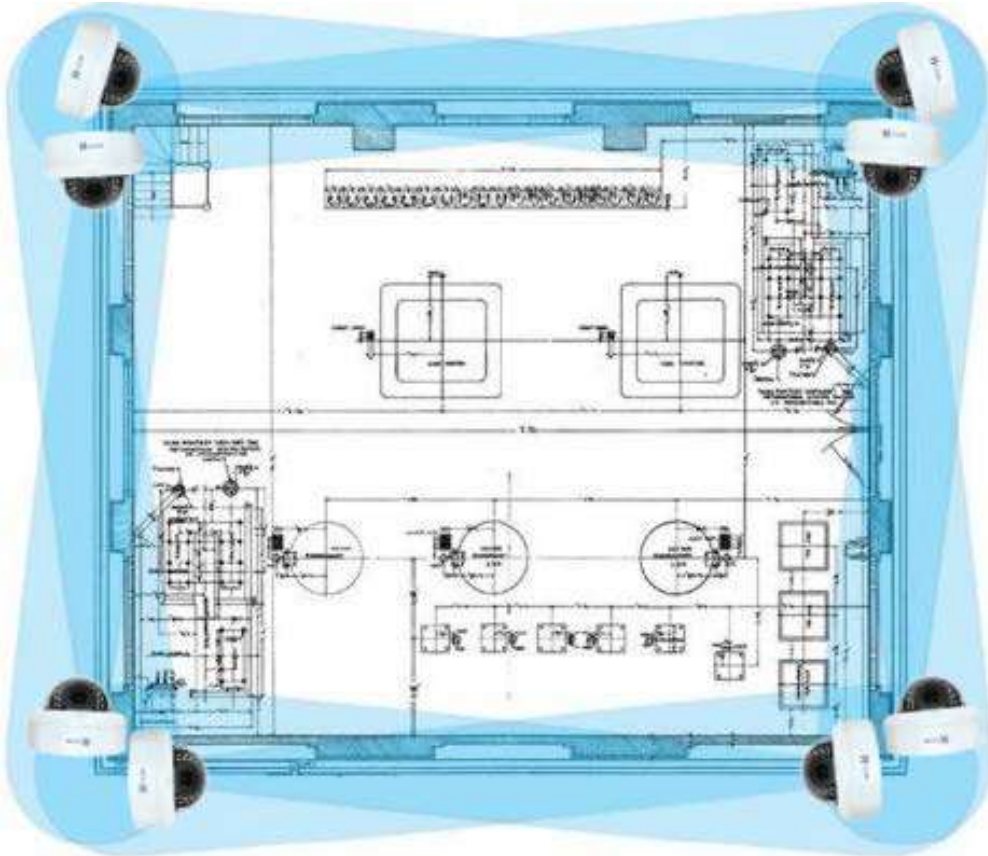
- Automatic and real time intrusion detection.
- Day & Night recognition, even in total darkness.
- Tracing and location of multiple intruders in the same time.

## The SPYNEL Concept



**Multiple SpyNel sensors for long distance**

# Integrated Thermal Imager and PTZ

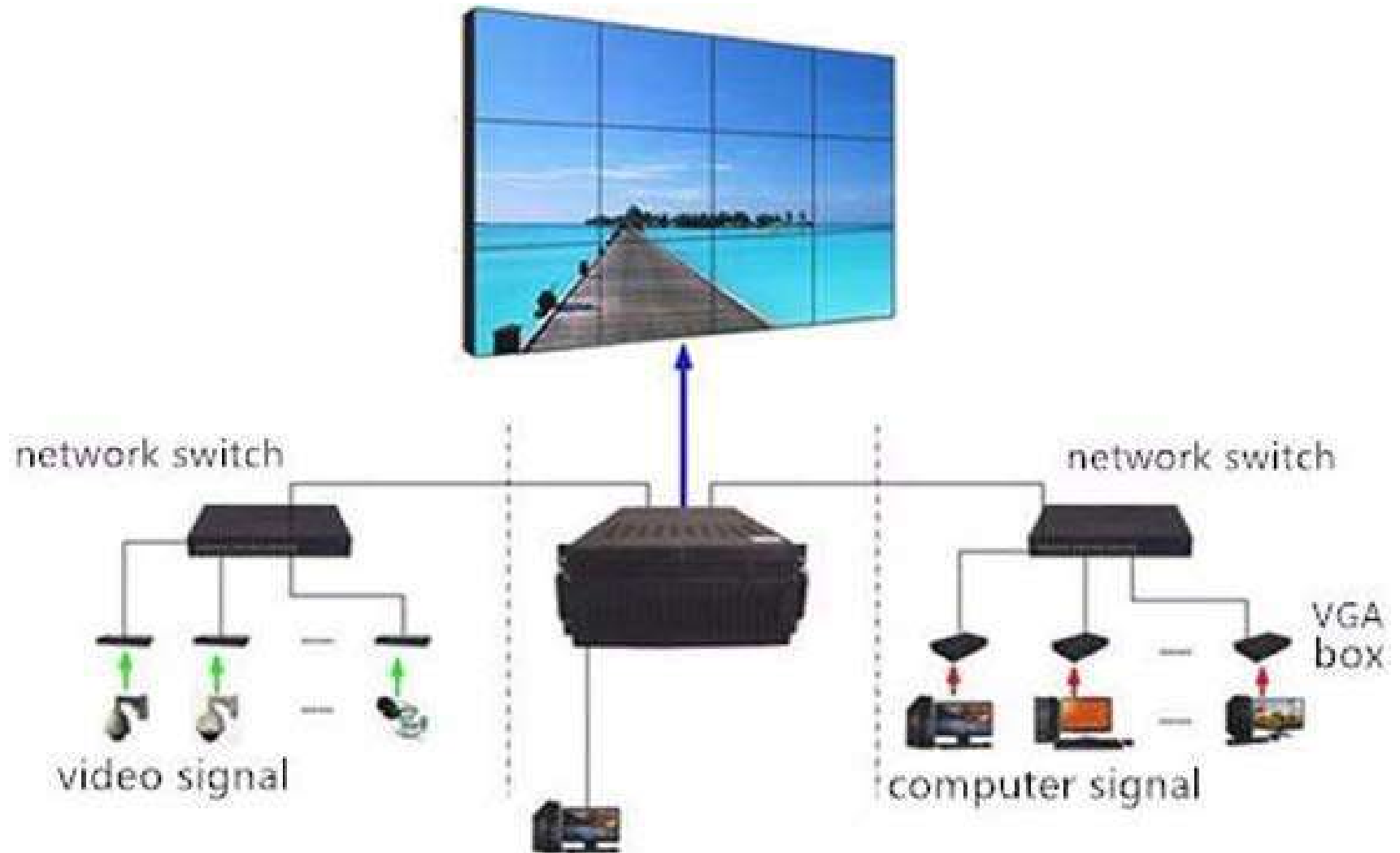


**Replace 8 Fixed Cameras**



**Get the same surveillance coverage**

# Video – Wall    CCTV



# Video Content Analysis



**Parking Management**



**Weapon Detection**



**Perimeter Intrusion Detection**



**Facial Detection**



**Number Plate Detection**



**Crowd Behavior Analysis**



# Video Content Analysis

Video content analysis is the capability of automatically analyzing video to detect and determine temporal and spatial events



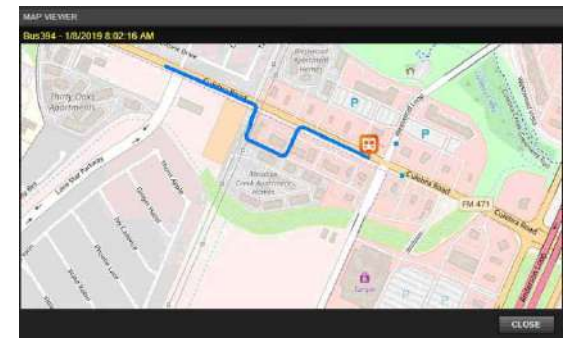
**Define area of interest, breach of a defined area**



**Stopped vehicle detects a vehicle stopped in a predefined area**



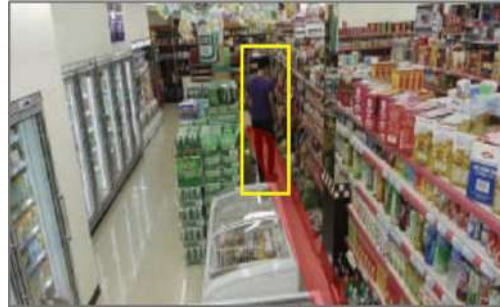
**Object detection allows user to identify an object unattended for longer than a predefined time**



**Vehicle Tracking on Map**

# Video Content Analysis

Video content analysis is the capability of automatically analyzing video to detect and determine temporal and spatial events



**Loitering**



**Asset Removed**



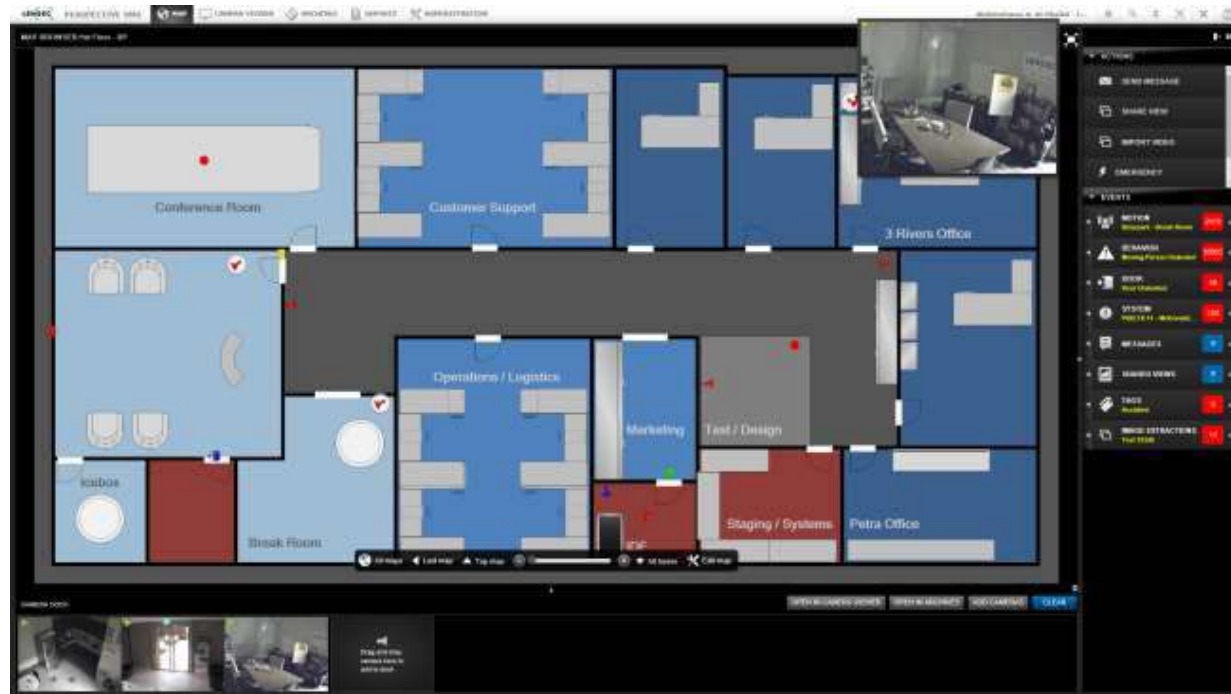
**Suspicious Object**



**Person Line Cross**

# Video Content Analysis

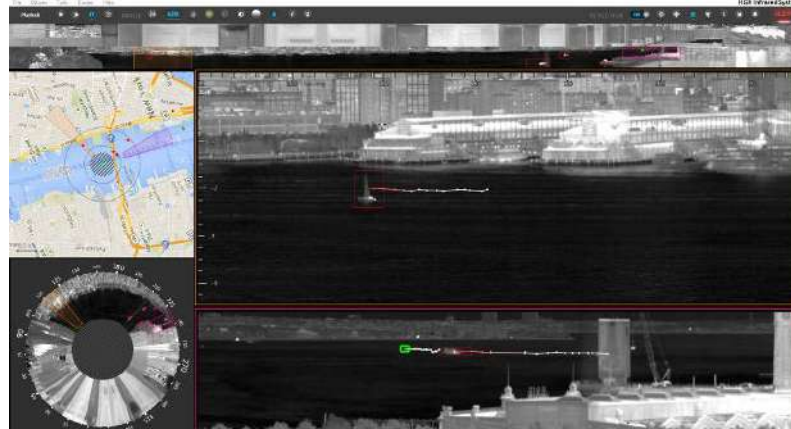
Video content analysis is the capability of automatically analyzing video to detect and determine temporal and spatial events



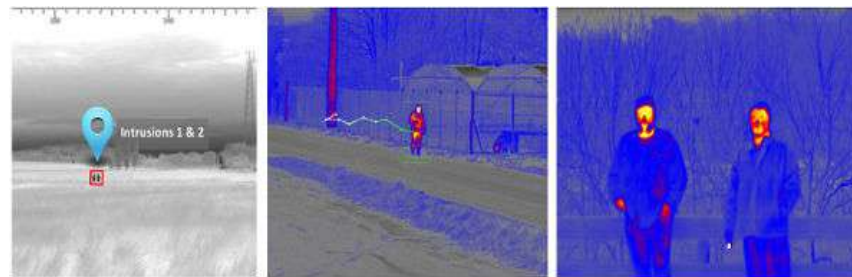
**Access Control integration (Controlling lock-unlock-pulse)**

# Intrusion Detection & Infrared Solutions

Allows detection, identification & tracking of any intrusion over 360°! Your Spynel 360° thermal imaging system provides never-seen-before wide area surveillance. With Spynel, you will receive early intrusion alerts to any type of threats, from swimmers to small wooden boats, without forgetting RIBs in heavy sea clutter, UAVs, stealth aircrafts...



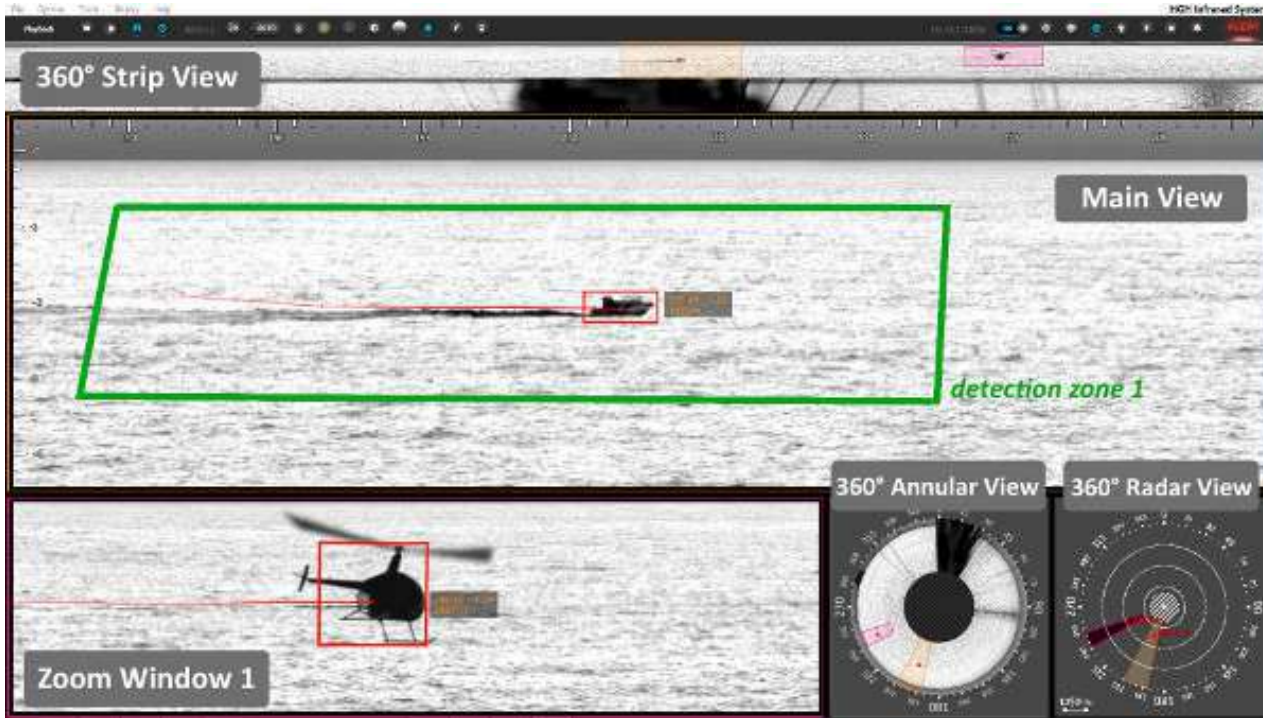
**Panoramic Detection System**



**Perimeter Intrusion Detection Solution**



# Intrusion Detection & Infrared Solutions





# FLEET MANAGEMENT SYSTEM

The purpose of Fleet Management in a business is to ensure the work vehicles of a business are operating smoothly, are constantly seeking ways to improve performance, are able to keep operation costs at a minimum, and maintain compliance with government regulations.



# ***Building Management***



Fire-Alarm



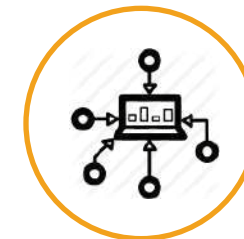
BMS SYSTEM



Nurse Call



Public Address



PSIM

# Fire-Alarm System

To meet the requirements of our ever-changing market, we pride ourselves on being a complete fire alarm system supplier. This means our customers can rely on us for their entire fire system requirements.



CONVENTIONAL FIRE ALARM



ADDRESSABLE FIRE ALARM

# PSIM

Designed to integrate multiple unconnected security applications and devices and control them through one comprehensive user interface.



# Public Address

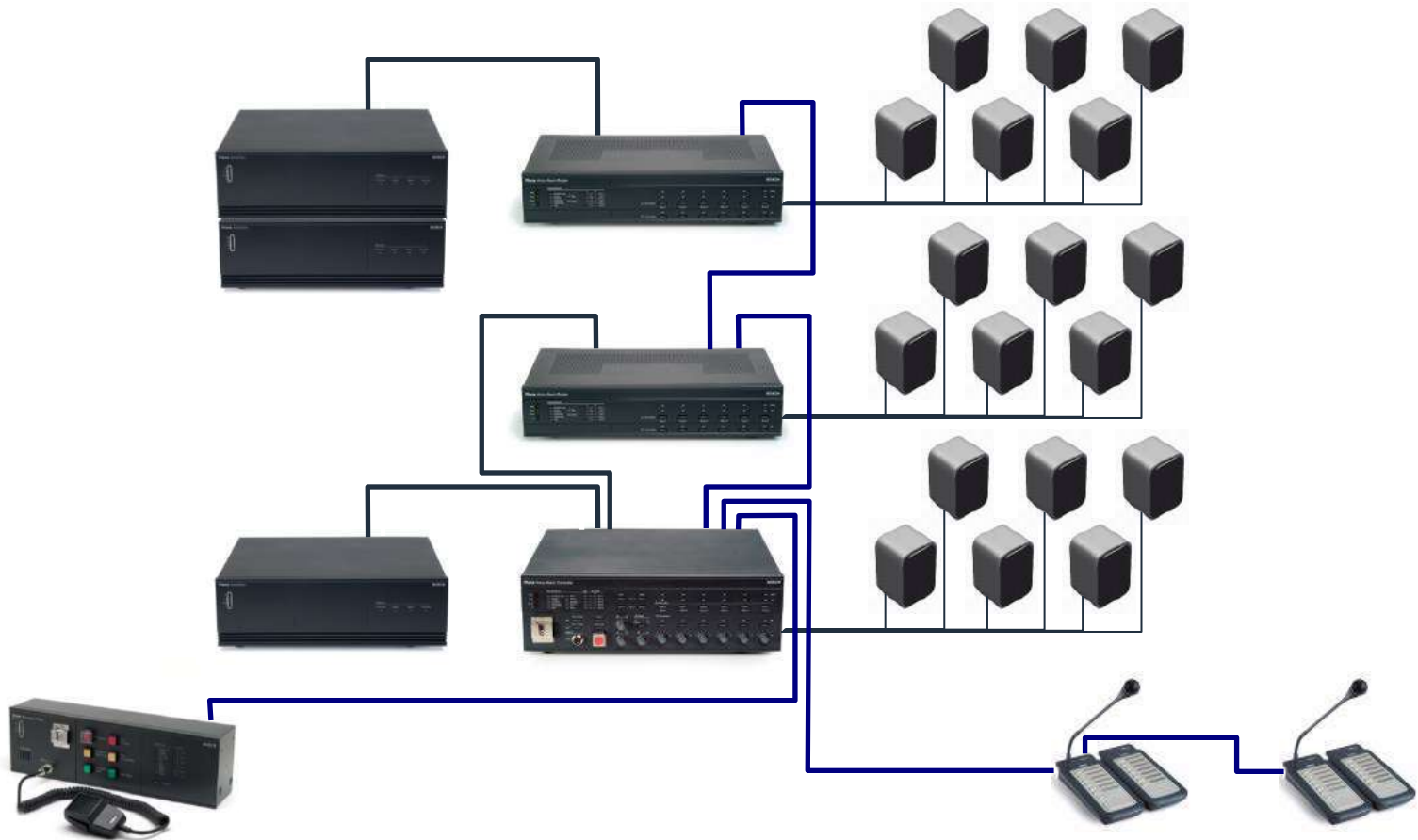
To meet the requirements of our ever-changing market, we pride ourselves on being a complete fire alarm system supplier. This means our customers can rely on us for their entire fire system requirements.





# Public Address

## System Design



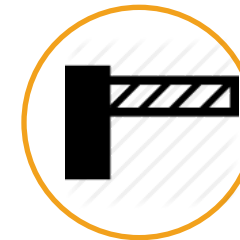
# Access Control



Time & Attendance



Biometrics Solutions



Security Lobby Gate



Metal Detectors  
& Body Scanners

# Time & Attendance

Automatic attendance marking system which records attendance & generates reports



# Biometrics Solutions

We provide a wide range of bio metric solutions that includes:

- Authentication Solutions
- Identity Management
- Access and Time Management
- Bio Signature
- Bio Infrastructure



# FACIAL & Iris RECOGNITION

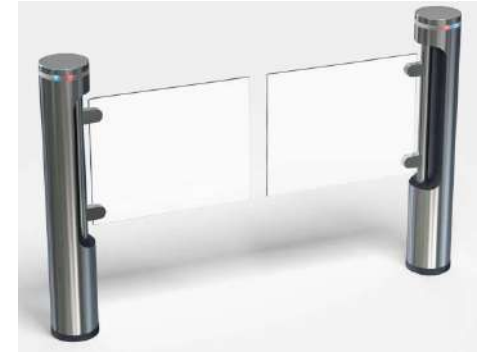
A technology capable of identifying or verifying a person from a digital image or a video frame from a video source





# Security Lobby Gate

Intelligent optical technology to detect tailgaters and unauthorized access and entrance control solutions to help organizations protect their people and assets



# Metal Detectors & Body Scanners

Device that detects objects on a person's body for security screening purposes  
And device detects the presence of metal nearby



# Visitor Management

By gathering increasing amounts of information, a Visitor Management System can record the usage of the facilities by specific visitors and provide documentation of visitor's whereabouts



# Visitors Management

Creating a workplace environment where your employees feel safe is of the utmost importance. ... Simply put, Visitor Management systems give you maximum control over the guests accessing your facilities, a key aspect to keeping those facilities safe and secure.



# Information Technology



38  
Networking & data



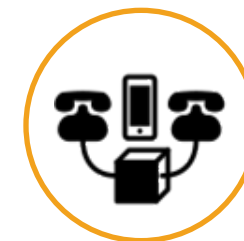
Master-Clock



Security solutions



Compute & Storage

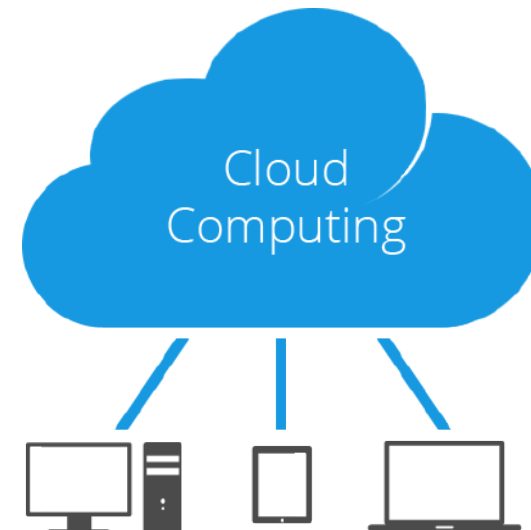
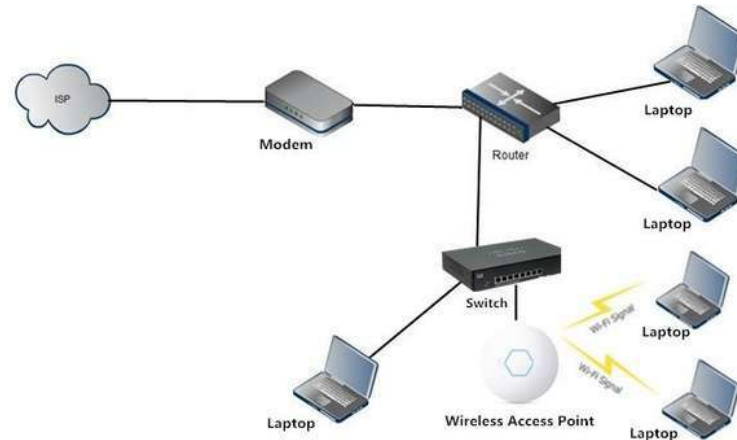


Telephone



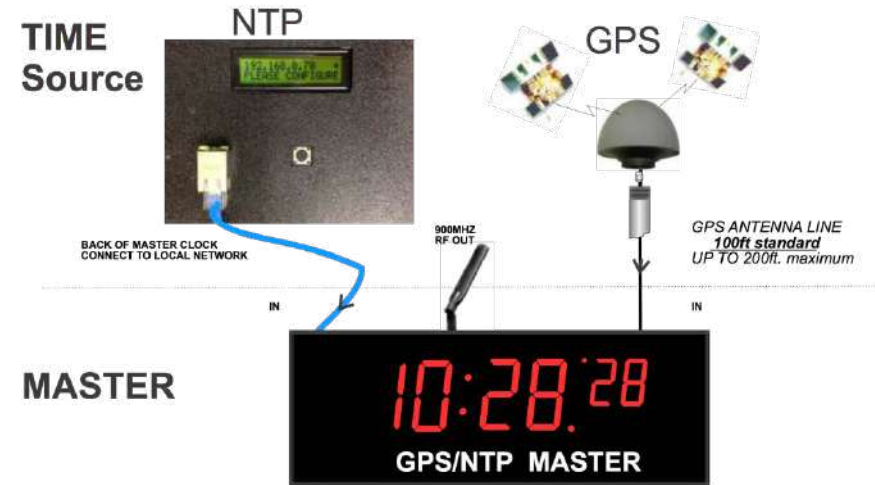
# Networking & data

The practice of transporting and exchanging data between nodes over a shared medium in an information system. Networking comprises not only the design, construction and use of a network, but also the management, maintenance and operation of the network infrastructure, software and policies.



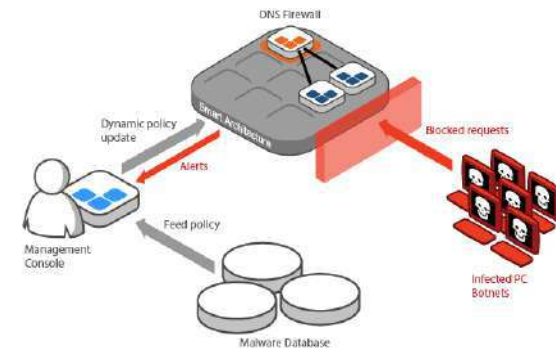
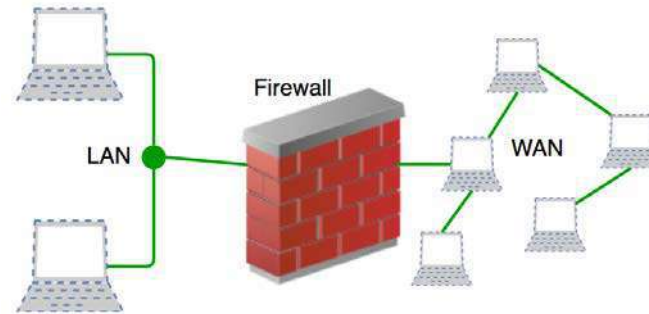
# Master-Clock

A master clock is a precision clock that provides timing signals to synchronize slave clocks as part of a clock network. Networks of electric clocks connected by wires or wireless to a precision master pendulum clock began to be used in institutions like factories, offices, and schools.



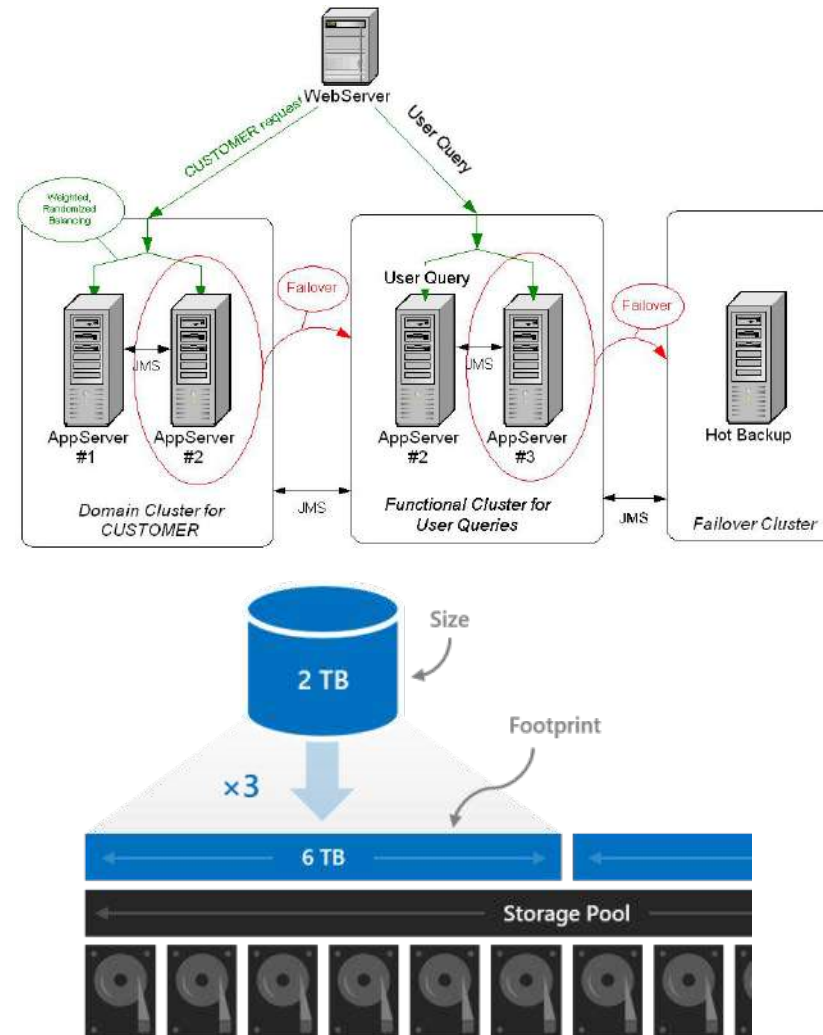
# Security solutions

Solutions which help companies assess and reduce risk by choosing and implementing network security solutions that protect the key enterprise assets. Wireless network and data center solutions help you secure enterprise infrastructure, communications environment, and end-user computing ecosystem



# Compute

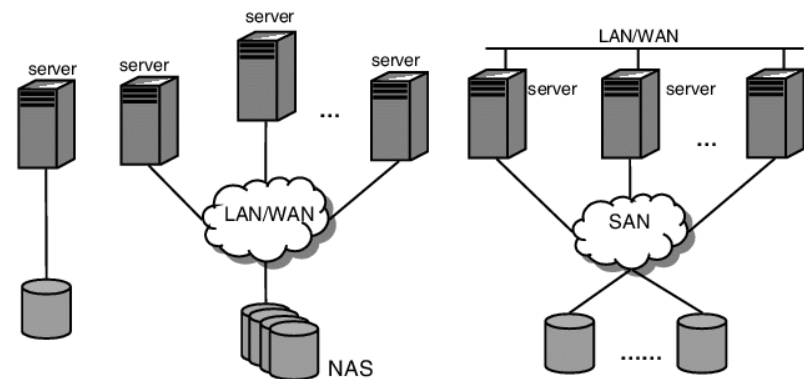
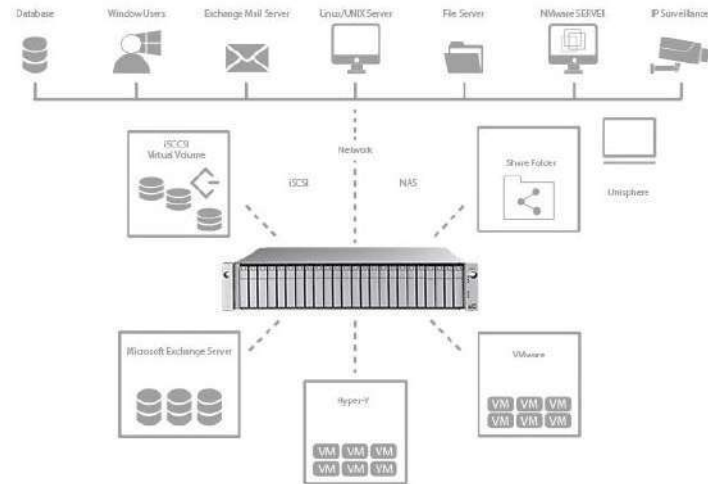
It gives you the ability to deploy and scale virtual machines on-demand. It offers guaranteed computational resources in a secure and isolated environment with standard API access, without the overhead of managing physical servers



# Storage

It is a process through which digital data is saved within a data storage device by means of computing technology

- ESXi Storage
- NAS
- SAN
- DAS



(a) DAS

(b) NAS

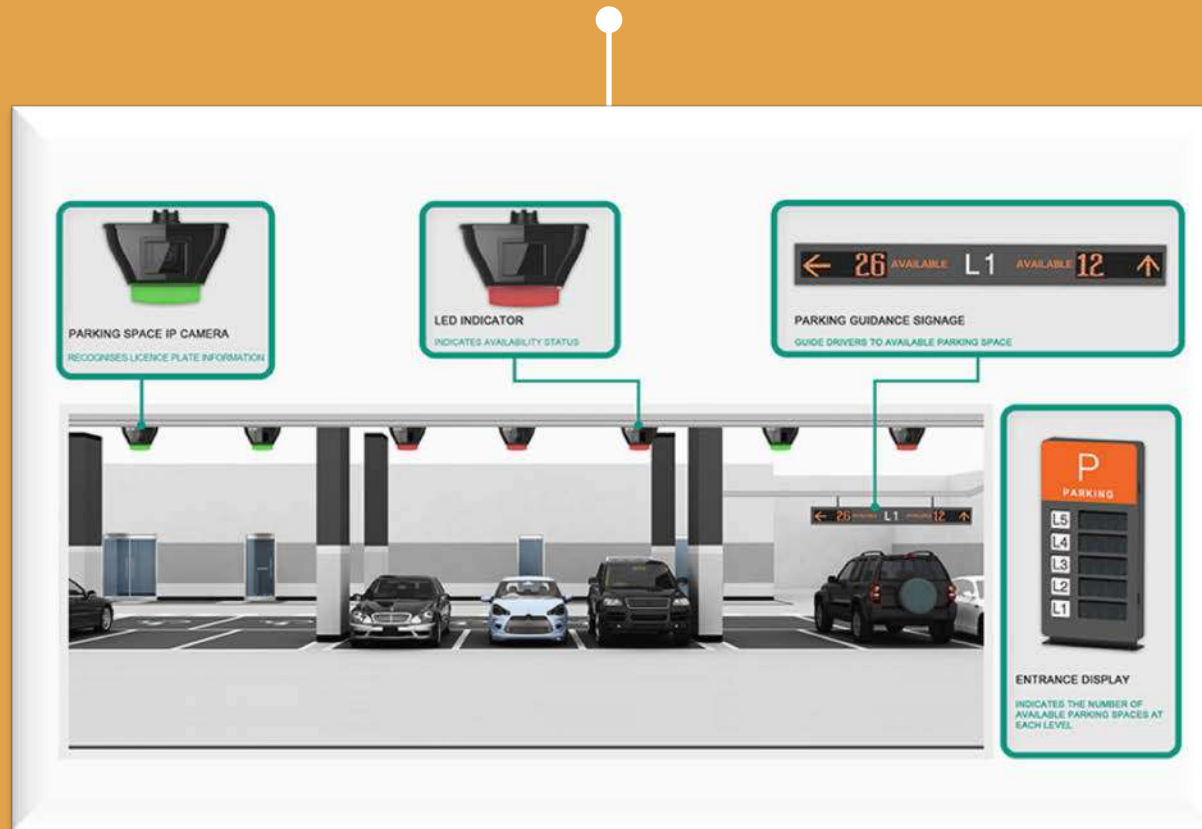
(c) SAN



# Telephone

A master clock is a precision clock that provides timing signals to synchronize slave clocks as part of a clock network. Networks of electric clocks connected by wires or wireless to a precision master pendulum clock began to be used in institutions like factories, offices, and schools.





# Parking Management Solutions

Parking Guidance



Under Vehicle Scanning



Gate Barrier



Road Blocker



Bollard

# Parking Guidance

Present drivers with dynamic information on parking within controlled areas



# Under Vehicle Scanning

An under vehicle surveillance system is a high-quality camera system which scans the undercarriage of passing vehicles to detect potential hidden threats or smuggling activity. The systems were designed to search for bombs and contraband that would otherwise go undetected.





# Road Blocker & Bollard

Road Blocker provides an effective method of securely controlling vehicle access to restricted area as an alternative to a rising arm barrier or sliding gate.



# Gate Barrier

Gate Barriers are generally employed in residential areas and parking premises for safe and authenticated access. Gate Barriers control the vehicle access at entry, exit gates.



# Gate Barrier & ANPR



Gate Barriers are generally employed in residential areas and parking premises for safe and authenticated access. Gate Barriers control the vehicle access at entry, exit gates.



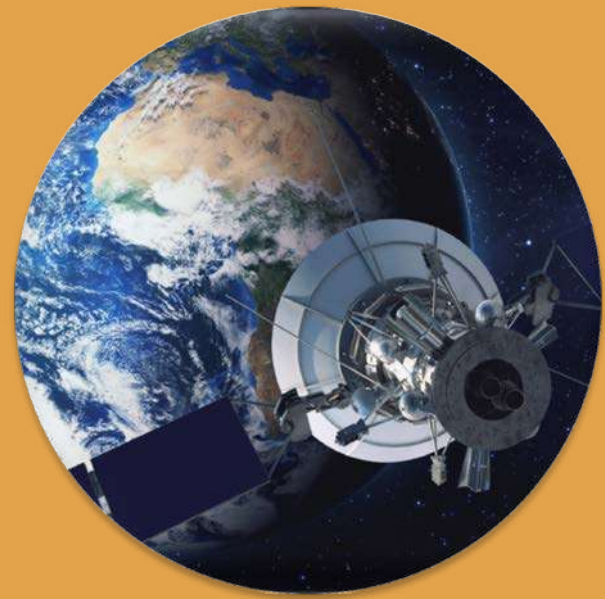
# TV Network Solutions



IP TV SYSTEM



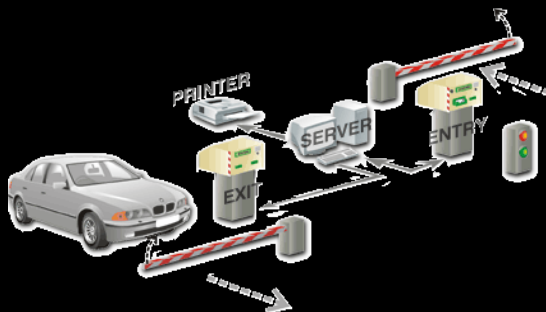
MATV SYSTEM



STAND ALONE SYSTEM

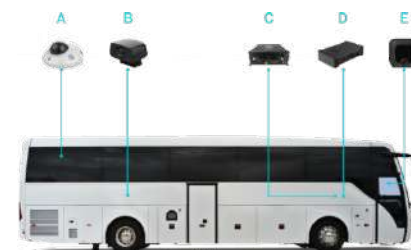
We are able to design, Install, Programme your IPTV, MATV and CATV systems for compounds, complexes, etc. to have your own choice of TV reception. Our support will never ends at this point it will be beyond the project time and to extend during that, to after-sale services.

# TV Network Solutions



And more

 bayounitech





We cover **INDUSTRIAL SECURITY SOLUTIONS** such as:

PETROCHEMICAL



MUNICIPAL/UTILITIES



MANUFACTURING



MILITARY



REMOTE MONITORING



TRANSPORTATION







# Thank you.

bayounitech, Intelligence where you need it

---